

Dataman Barcode Systems

D-Tech DB-6003

(1D laser Wireless laser scanner)



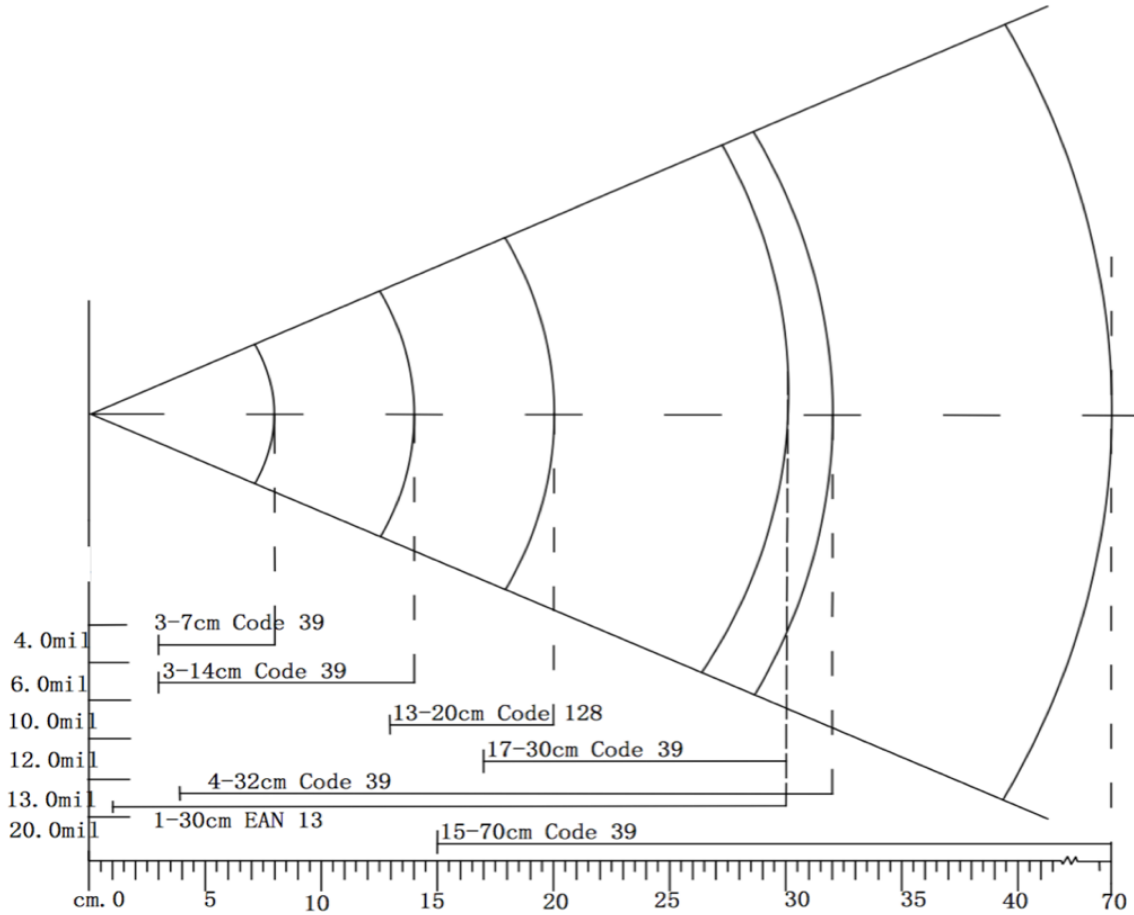
| Technical parameters | |
|-------------------------------------|---|
| Wireless specifications | |
| Communications | 433 |
| Communication frequency | 433-440MHz |
| Transmission range | ≤100M (In empty area 100M) |
| Data rate | 10Kbps |
| Memory | 100,000@13Byte barcode |
| Battery capacity | 1500mAh (Lithium battery) |
| Charging time | 6H |
| The working time of the full charge | 6h (continuous reading situation) 12h (Manual reading situation) |

| | |
|------------------------------------|---|
| | More than 15 days (Stand-by time) |
| Communication mode | Read-time mode/Inventory mode / Cache mode |
| Electrical Characteristics | |
| Interface | RS-232/USB HID KEYBOARD/USB VCP |
| Voltage requirement | DC 5V±10% |
| Current consumption | Max:110mA Min : 50mA |
| Optical Characteristics | |
| Light source | 650nm visible laser diode |
| Performance Characteristics | |
| Scan Rate: | 100 scans/second± 20 scans/second |
| Decode angle | Pitch angle:±35° Skew angle:±75° Tilt angle:±40° |
| Curvature | R≥15 mm (EAN8) , R≥20 mm (EAN13) (resolution=0.26mm , PCS=0.9) |
| Min resolution | SR : 0.127 / 5mil (PCS 0.9) HD : 0.08 / 3.2mil (PCS 0.9) |
| Min .PCS value | > 20%UPC/EAN 13 (13mil) |
| Language | multiple languages |

| | |
|-------------------------------|---|
| Identification | EAN13 , EAN8 , UPC A , UPC E , CODABAR (NW-7) , CODE 39 , CODE 93 , INTERLEAVED 2OF5 , STANDARD 2OF5 , MATRIX 2OF5 , CODE 128 , EAN/UCC 128 , CODE 11 , CHINESE POST |
| Physical Characteristics | |
| Dimension | Scanner : 70mm*95mm*168mm(L*W*H) Base : 145mm*112mm*74mm(L*W*H) |
| Weight | scanner : 186g Receiver : 188g |
| Environmental Characteristics | |
| Temp | -20°-65°C / -4°to 149°F(operation)) -30°- 70°C /-22°to 158°F(storage) |
| Humidity | 5 - 90% (operation)) 5 - 90% (storage) |
| Ambient Light: | fluorescent light 4000 lx max , direct sun light 80,000 lx max ,white light 4000 lx max |
| Shock drop test | 1.5m drop onto concrete surface |
| MBTF | 30,000 hours except laser diode(10.000 hours)and except mirror scan unit(10,000 hours) |
| Regulatory | |
| Laser Safety | JIS-C-6802 Class 2 |
| Electrical Safety | UL 60950 , EN/IEC 60950 |
| EMI/RFI | FCC Part 15 Class B,EN 55024/CISPR 22 |
| Environmental | RoHS |

1. Depth of field

| Symbology | Resolution (mm) | Depth of field (mm) |
|-----------|-------------------|-----------------------|
|-----------|-------------------|-----------------------|



| | | |
|---------|-------|---------|
| Code 39 | 4mil | 3-7cm |
| Code 39 | 6mil | 3-14cm |
| Code 39 | 10mil | 13-20cm |
| Code 39 | 12mil | 17-30cm |
| EAN 13 | 13mil | 1-30cm |
| Code 39 | 20mil | 15-70cm |
| | | |